



**Model LL1100**  
PC-based Parameters Setting Tool  
**Model LL1200**  
PC-based Custom Computation Building Tool

The media for LL1100/LL1200 were changed into CD from the 3.5-inch floppy disk. For the confirmation of the package contents and the setup method, see this Notice of Alterations.

The user's manuals of LL1100/LL1200 describe the usage with RS-232C serial communication. See this Notice of Alterations for the following contents which are related to USB.

Contents related USB:

- Confirmation of the Package Contents
- Operating Environment and Wiring Specifications
- Setup
  - Installing USB Converter Driver Software
  - Installing LL1100/LL1200
- Connecting the US1000 Controller to Personal Computer

For the start-up of LL1100/LL1200 and the operation method, see the user's manual.

LL1100 PC-based Parameters Setting Tool: IM 5G1A01-01E

LL1200 PC-based Custom Computation Building Tool: IM 5G1A11-01E



IM 05G01A01-01E-S01  
1st Edition: Dec. 2006

## Confirmation of the Package Contents

### Model and Suffix Codes

Model code	Suffix code	Description
LL1100		PC-based Parameters Setting Tool
LL1200		PC-based Custom Computation Building Tool
	-U10	Model for use with IBM PC/AT compatible machine (common to English and Japanese version), USB interface

### Package Contents

- -U10 CD (1 disk):
  - LL1100 or LL1200/USB converter driver software
  - Dedicated adapter (for USB interface) and dedicated cable (for USB interface):
    - For connecting a personal computer to optical communication interface on the front of the US1000 controller (1 set)
- User's Manual (LL1100; 1 copy, LL1200; 3 copies)

## Operating Environment and Wiring Specifications

### System Requirements

- Personal computer: Windows 2000/XP-enabled IBM PC/AT compatible machine
- Operating system: Windows 2000 (Professional)/XP (Home Edition/Professional)
- CPU: 300-MHz Pentium processor or superior is recommended.
- Main memory: 128 MB minimum is recommended.
- Hard disk: Memory space required to store the tool's programs; 5 MB for LL1100 and 9 MB for LL1200  
Memory space required to store the parameter data; 2 MB minimum  
Memory space required to store the driver for USB-Serial converter; 1 MB

- CRT display: 800 x 600 pixels or superior  
Smaller fonts should be used.  
Should be capable of handling at least 256 colors.
- USB communication port: One channel (COM1 to COM16), with SeriesA connector, compliant with USB Specification Rev1.1.
- CD-ROM drive: Required for installation.
- Printer: Required for printing. Windows 2000/XP-compatible A4-size printer

### Dedicated Adapter

- Communication method: US1000; optical, contactless, bidirectional serial communication  
Personal computer; compliant with USB Specification Rev1.1
- Power supply: Supplied from USB bus power (no internal battery)  
Input rating: 4.4 to 5.25 V DC, 100 mA (including a dedicated cable)
  - \* No plug for external power supply, no power switch
- Ambient temperature range: 0 to 50°C
- Ambient humidity range: 20 to 90% RH (no condensation)
- Transport and storage conditions: -20 to 65°C, 10 to 90%RH (no condensation)
- Dust- and water-proof construction: Not applied.
- Standard: CE Marking (EMC only) conformity

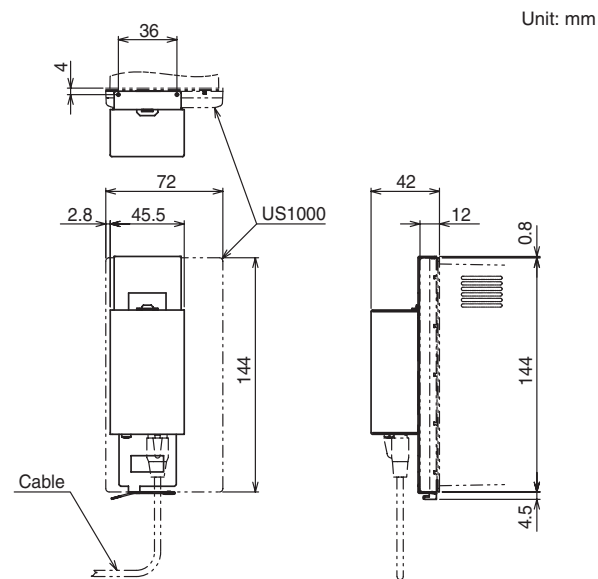


Figure 1 External View of the Dedicated Adapter



The dedicated adapter and the dedicated cable are not waterproof. Do not use them in locations that are likely to be exposed to splashes of water or other liquids.

### Dedicated Cable

Built-in USB-Serial converter  
Personal computer side: USB SeriesA plug  
Adapter side: RJ45 (8-pin) plug  
Cable length: Approx. 2.7 m

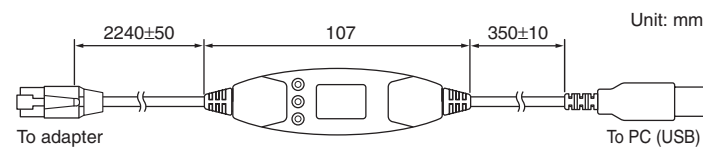


Figure 2 External View of the Dedicated Cable

Note: The dedicated cable for USB interface is for the dedicated adapter for USB interface.

## Setup

### Installing USB Converter Driver Software

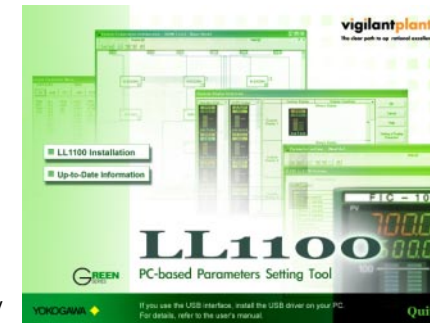


- Before installing USB converter driver software, quit all running applications.
- Logon in Windows 2000/XP:
  - Log on with the user name which belongs to the Administrators group.
  - If logged on with the user name which does not belong to the Administrators group, the program will not start normally.

### Installing in Windows 2000

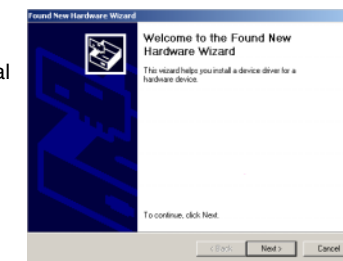
This section explains how to install the driver software necessary to use LL1100/LL1200 supporting USB in Windows 2000. The installation is performed in two steps. The USB device driver for the dedicated cable is installed first and then the virtual COM port driver is installed.

1. Start Windows.
2. Insert the CD of LL1100 or LL1200 into the CD-ROM drive.  
The start-up screen appears automatically.

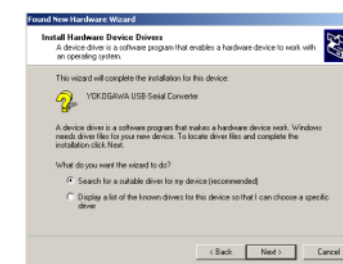


Example of LL1100 display

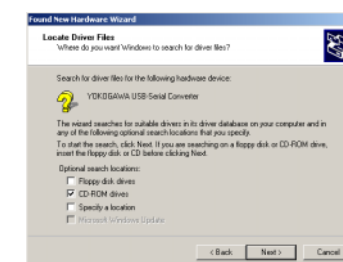
3. Connect the connector of dedicated cable to the USB communication port of a personal computer. This automatically starts up the Found New Hardware Wizard. Click **Next**.



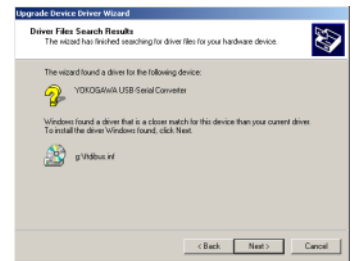
4. The Install Hardware Device Drivers screen appears. Select **Search for a suitable driver for my device [recommended]**. Click **Next**.



5. The Locate Driver Files screen appears. Checkmark **CD-ROM drives**. Click **Next**.



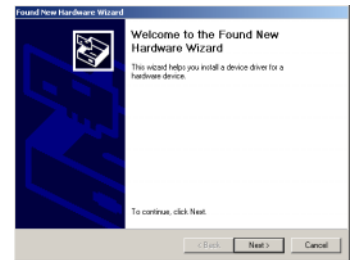
6. When the search for driver files is finished, click **Next**.



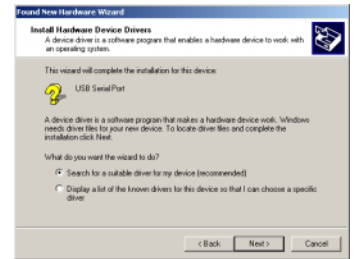
7. Copying of the USB device driver for the dedicated cable begins. When installation is completed, a confirmation screen appears. Click **Finish**.



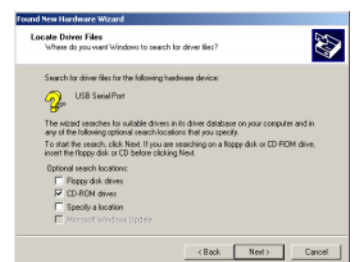
8. Installation of the virtual COM port driver begins continuously. Click **Next**.



9. The Install Hardware Device Drivers screen appears. Select **Search for a suitable driver for my device [recommended]**. Click **Next**.



10. The Locate Driver Files screen appears. Checkmark **CD-ROM drives**. Click **Next**.



11. When the search for driver files is finished, click **Next**.



12. Copying of the virtual COM port driver begins. When installation is completed, a confirmation screen appears. Click **Finish**.



At this point, you have completed installing the driver software in Windows 2000.

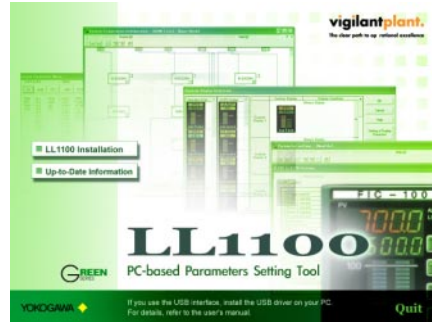


● **Installing in Windows XP**

This section explains how to install the driver software necessary to use LL1100/LL1200 supporting USB in Windows XP. The installation is performed in two steps. The USB device driver for the dedicated cable is installed first and then the virtual COM port driver is installed.

1. Start Windows.
2. Insert the CD of LL1100 or LL1200 into the CD-ROM drive.

The start-up screen appears automatically.



Example of LL1100 display

3. Connect the connector of dedicated cable to the USB communication port of a personal computer. This automatically starts up the Found New Hardware Wizard. Select **No, not this time**. Click **Next**.

The screen on the right appears only when ServicePack2 is installed.



The screen may not appear depending on the setting of Windows Update.

4. Select **Install the software automatically (Recommended)**. Click **Next**.



5. A message appears to warn that the software you are installing has not passed Windows Logo testing. Click **Continue Anyway**.



6. Copying of the USB device driver for the dedicated cable begins. When installation is completed, a confirmation screen appears. Click **Finish**.



7. Installation of the virtual COM port driver begins continuously. Select **No, not this time**. Click **Next**.

The screen on the right appears only when ServicePack2 is installed.



The screen may not appear depending on the setting of Windows Update.

8. Select **Install the software automatically (Recommended)**. Click **Next**.



9. A message appears to warn that the software you are installing has not passed Windows Logo testing. Click **Continue Anyway**.



10. Copying of the virtual COM port driver begins. When installation is completed, a confirmation screen appears. Click **Finish**.

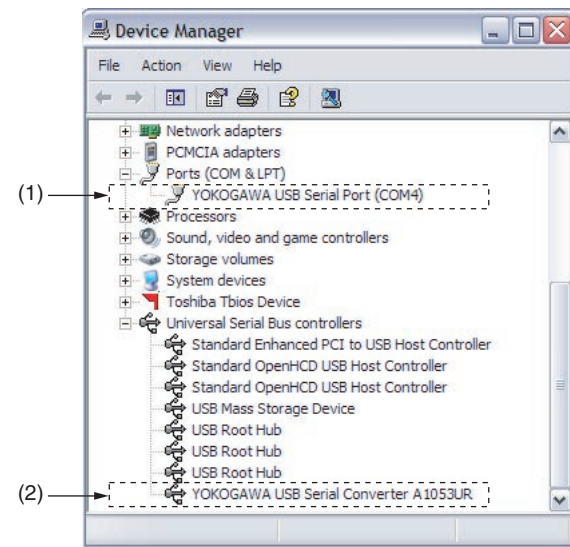


At this point, you have completed installing the driver software in Windows XP.

● **Verifying Installation**

From the **Start** menu of Windows, double-click **System** in **Control Panel**. Select **Hardware** tab and click **Device Manager**.

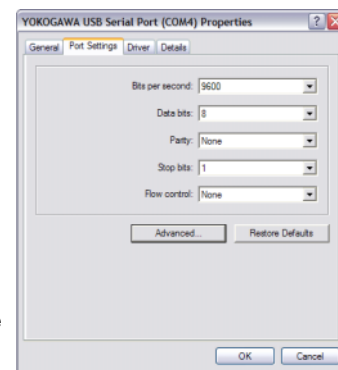
Verify that the USB device driver "YOKOGAWA USB Serial Converter A1053UR" is installed under "Universal Serial Bus controllers" and the virtual COM port driver "YOKOGAWA USB Serial Port (COMn)" is added under "Ports (COM & LPT)" as COM port.



The COM port number assigned to the dedicated cable can be verified by the port number displayed in (1) "YOKOGAWA USB Serial Port (COMn)" of Device Manager (see above).

To change the COM port number, double-click (1) in the figure above, select **Port Settings** tab of Properties screen and click **Advanced**.

Change the COM port number in the Advanced Settings for COMn screen.

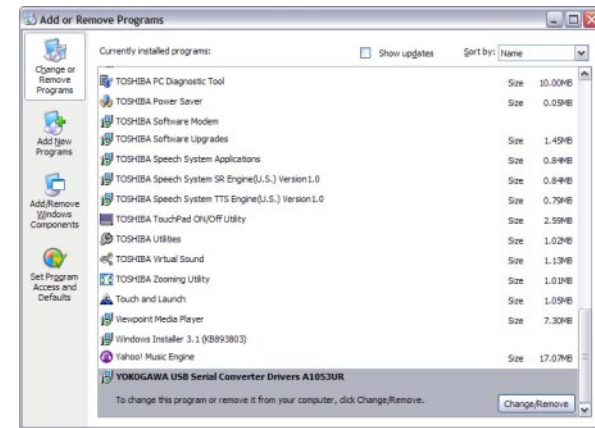


● **Uninstalling USB Converter Driver Software**

When uninstalling the driver, follow the procedure below.

1. Remove the dedicated cable if it is connected to a personal computer.
2. In **Control Panel**, select **Add or Remove Programs**.

Note: The indications are **Add or Remove Applications** for Windows 2000 and **Add or Remove Programs** for Windows XP

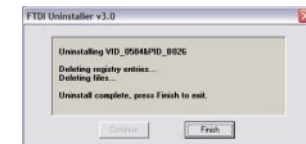


Example of Windows XP

3. Select **YOKOGAWA USB Serial Converter Drivers A1053UR** and click **Change/Remove**.
4. Follow the instructions appearing on screen. Verify that the dedicated cable is removed. Click **Continue**.



5. Follow the instructions appearing on screen. Click **Finish**.



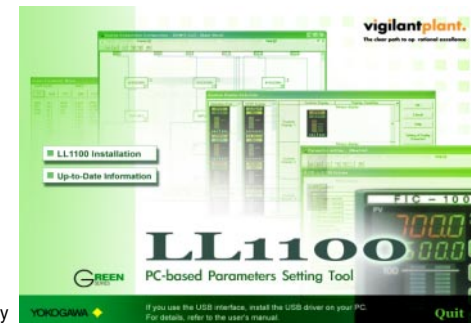
**Installing LL1100/LL1200**

NOTE

- When reinstalling LL1100/LL1200, uninstall the installed LL1100/LL1200 first and then reinstall LL1100/LL1200.
- Before installing LL1100/LL1200, quit all running applications.
- Logon in Windows 2000/XP:
  - Log on with the user name which belongs to the Administrators group.
  - If logged on with the user name which does not belong to the Administrators group, the program will not start normally.

1. Start Windows.
2. Insert the CD of LL1100 or LL1200 into the CD-ROM drive. The start-up screen appears automatically.

Example of LL1100 display



3. Click **LL1100 Installation** or **LL1200 Installation**.
4. To continue, follow the message given in each dialog box.

NOTE

Avoid entering just the drive as the installation location, such as D:\. Enter the full directory path.

● **Verifying Installation**

LL1100: From the **Start** menu of Windows, point to **Programs**, then **LL1100** and verify that the LL1100 contains **LL1100**.

LL1200: From the **Start** menu of Windows, point to **Programs**, then **LL1200** and verify that the LL1200 contains **LL1200**.

■ **Connecting the US1000 Controller to Personal Computer**

Follow the procedure below to connect the US1000 controller to a personal computer.

1. Connect the dedicated adapter to the USB communication port of a personal computer using the dedicated cable.
2. As shown in Figure 4, hang the dedicated adapter from the top groove of the US1000 controller.
3. Push the adapter to the US1000 controller's front panel to securely fix it in place.

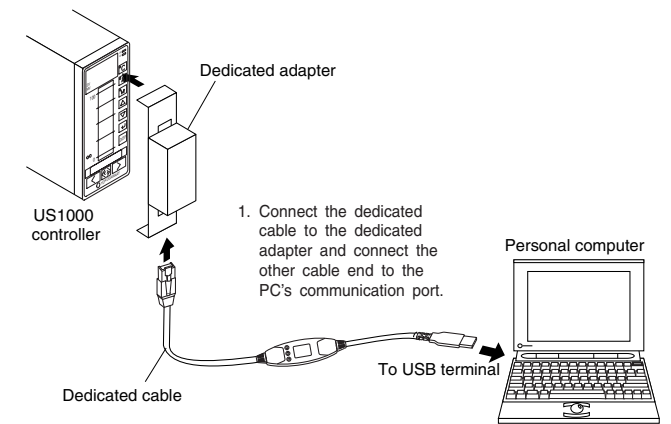


Figure 3 Connection via Dedicated Adapter

NOTE

- Make sure the dedicated adapter is attached to the US1000 controller in a vertical orientation. Communication is not possible if the dedicated adapter is attached in a slanting position.
- Do not remove the dedicated cable (for USB interface) while LL1100/LL1200 communicate, or it may affect the stability of the operation system.
- Do not suspend while LL1100/LL1200 communicate, or the system may fail to recover subsequently from the suspension.

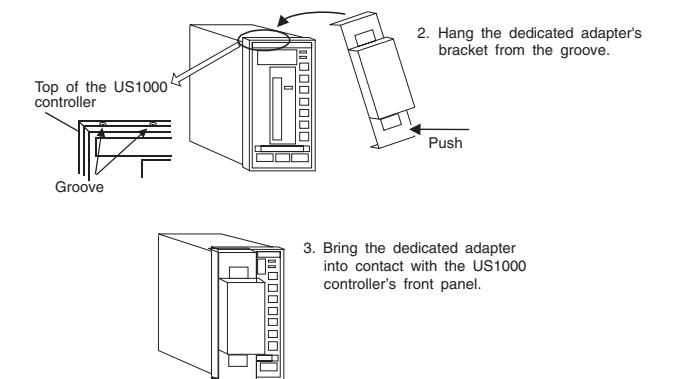


Figure 4 Attaching the Dedicated Adapter

**Trademarks:**

- Windows 2000/XP are registered trademarks of Microsoft Corporation, USA.
- Pentium is a registered trademark of Intel Corporation, USA.
- Ethernet is a registered trademark of XEROX Corporation, USA.
- Other company and product names are trademarks or registered trademarks of their respective holders.